



ecoCompute Berlin | 14.11.2025

# Scaling the abilities to experiment in digital product eco-design



Solutions for a sustainable world.

[resilio-solutions.com](https://resilio-solutions.com) – [contact@resilio-solutions.com](mailto:contact@resilio-solutions.com)







# Facing a challenge: eco-design in a **large** group

How do I **scale** eco-design?

I paid the best  
consultants last year, but  
nobody cares!

*Well, one app is fine  
**but**... we have 6'000  
apps!*

*Pleaaaaase, anyone around  
with an idea?*



# Who are we?

A team of 25 passionate experts in 10 different domains.

Our mission:

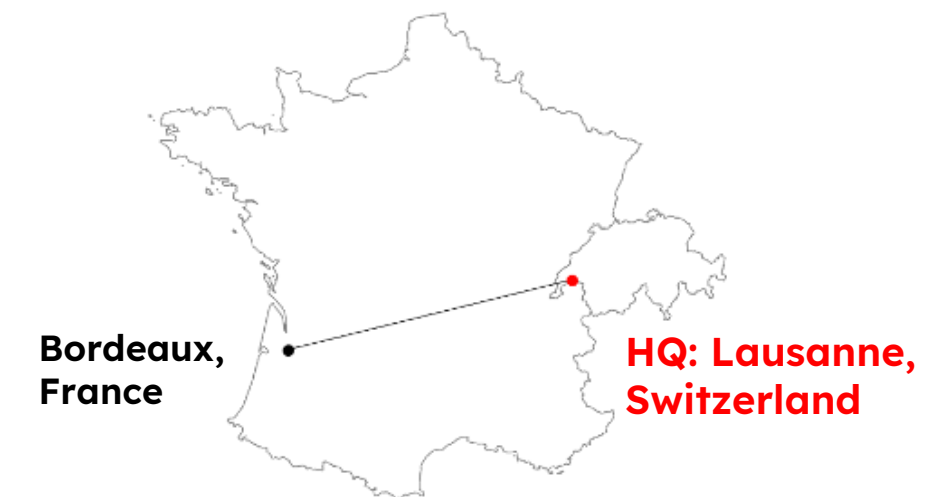
To support organizations towards digital sustainability

Our vision:

Act today to preserve tomorrow

Operating Worldwide

7 languages



Resilio is a **Swiss** based company that helps organisations define and implement Sustainable IT strategies.

IN PARTNERSHIP WITH...



swiss made software



# Who am I?



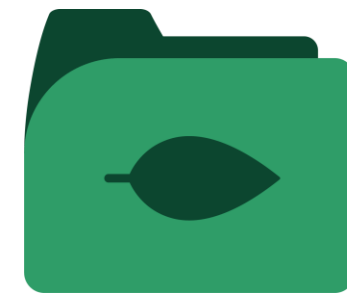
**Amael Parreaux-Ey**

CEO

[amael.parreaux-ey@resilio.tech](mailto:amael.parreaux-ey@resilio.tech)

+41 78 673 77 18

+33 6 84 29 53 30



# resilio

Certified  
**B**  
Corporation

**Supporting organizations towards  
sustainable digitalization**



**Academy**



**Tech**



**Consulting**



**Database**

**Cloud**  **Assess**





# #1

## The challenge





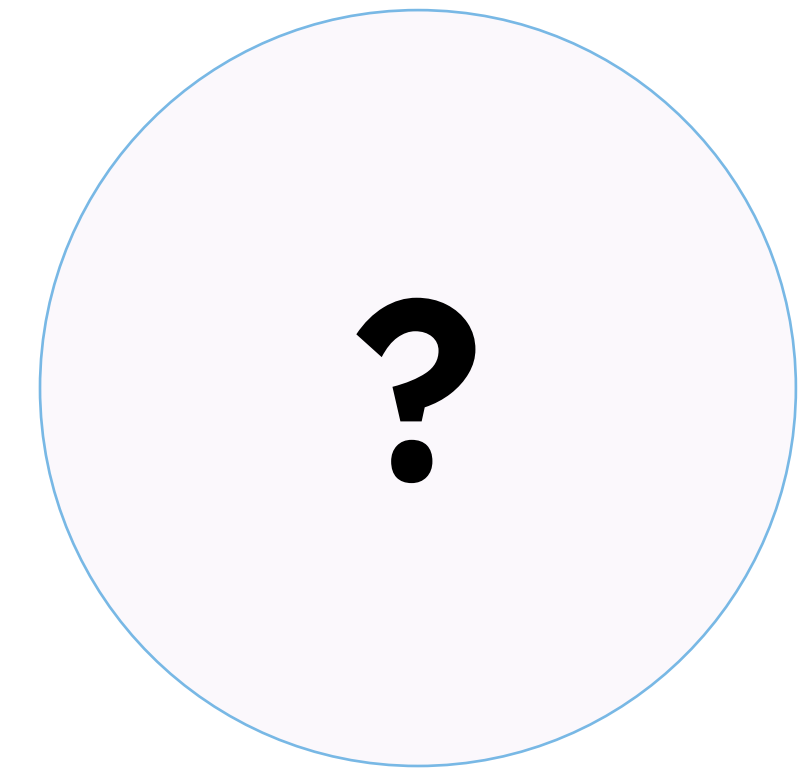
# Let's meet our user!

## Company context:

- Aircraft company, EU based
- ~150'000 pers. in the group
- 5-6'000 pers. in the IT dept. alone
- 6'000 apps in portfolio

## Sustainable IT strategy:

- ✓ **Assess global** IT footprint (in operation, **not** products)
- Work on **key infrastructures**
- ? **Scale** to so many PO & projects....



**John Doe**  
Sustainable IT Manager  
Aircraft EU Corp

How to embark so many project teams, architects, PO, PM, to deliver & scale  
eco-design practices across all the organization?  
How to *teach* the right practices?





# #2

**A non-technical solution**

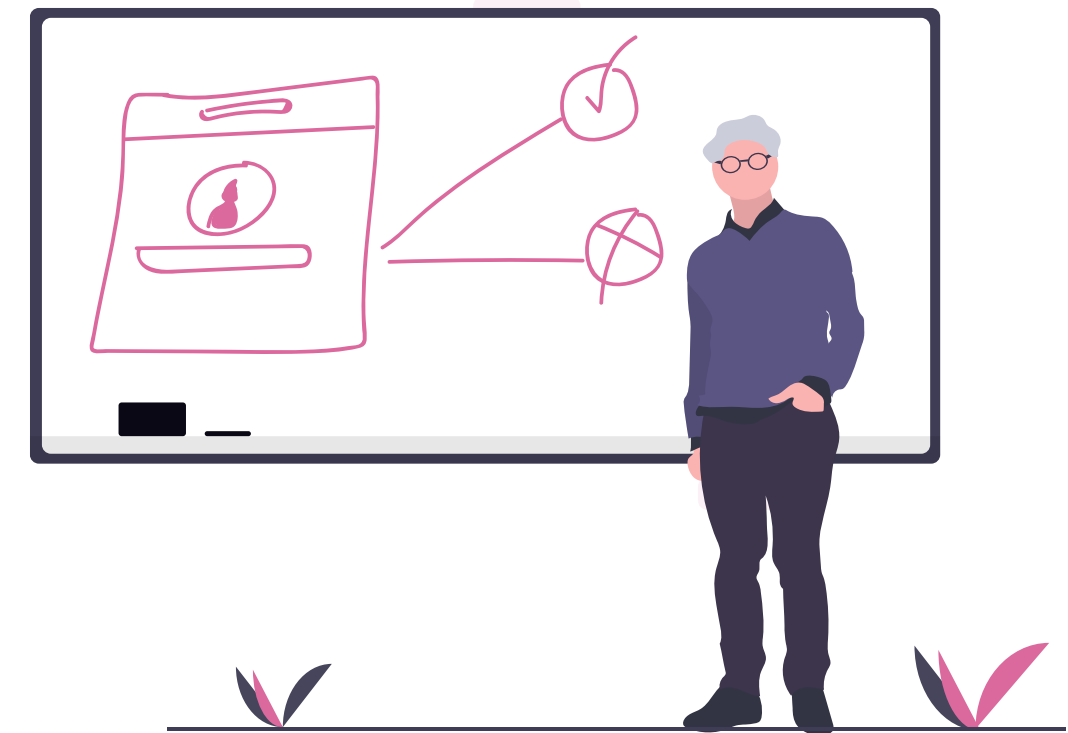


# Which approach?

## Experiment



## Teach



➔ Neuroscience *teach* us: we have **2 brain paths**.  
Think about your chemistry courses!





# How does it look like?

Your Studies

ACV du SI

Dashboard

▲ INVENTORY

Detailed view

Settings

User environment

Printing

Phones

Local network (LAN) &

Contact your consultants

Accessibility

Eco-design

Q&A

Glossary

Method

Support

fr - en

User environment

Organization  
Osmose

Study  
ACV du SI 2023

Perimeter  
USA

Type	Unit	Quantity	Internal lifetime (years)	Reuse (%)	Reuse (years)	Total lifetime (years)	Data quality			
Laptops : 5 820 Equipment, with an average lifespan of 3,4 years										
Dell Latitude 3120	Item	300	2	20	2	2,4	Medium			
Laptop <i>Generic - Office/basic</i>	Item	5000	3	20	2	3,4	Low			
Laptops - CMDB_laptops		520				4				
Desktops : 350 Item, with an average lifespan of 5,1 years										
Desktop <i>Generic - Basic</i>	Item	300	4	50	2	5	---			
Desktop <i>Generic - Middle-range</i>	Item	50	6	0	0	6	---			



# How does it look like?

Environment

Organization

Osmose

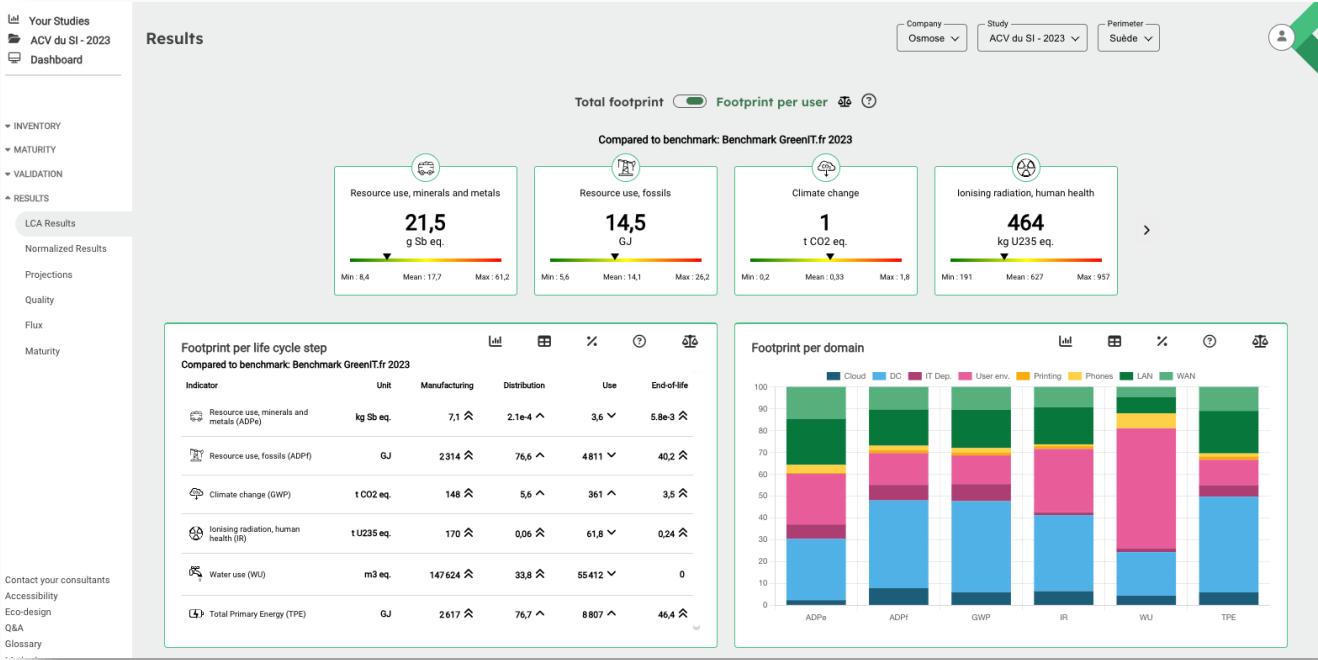
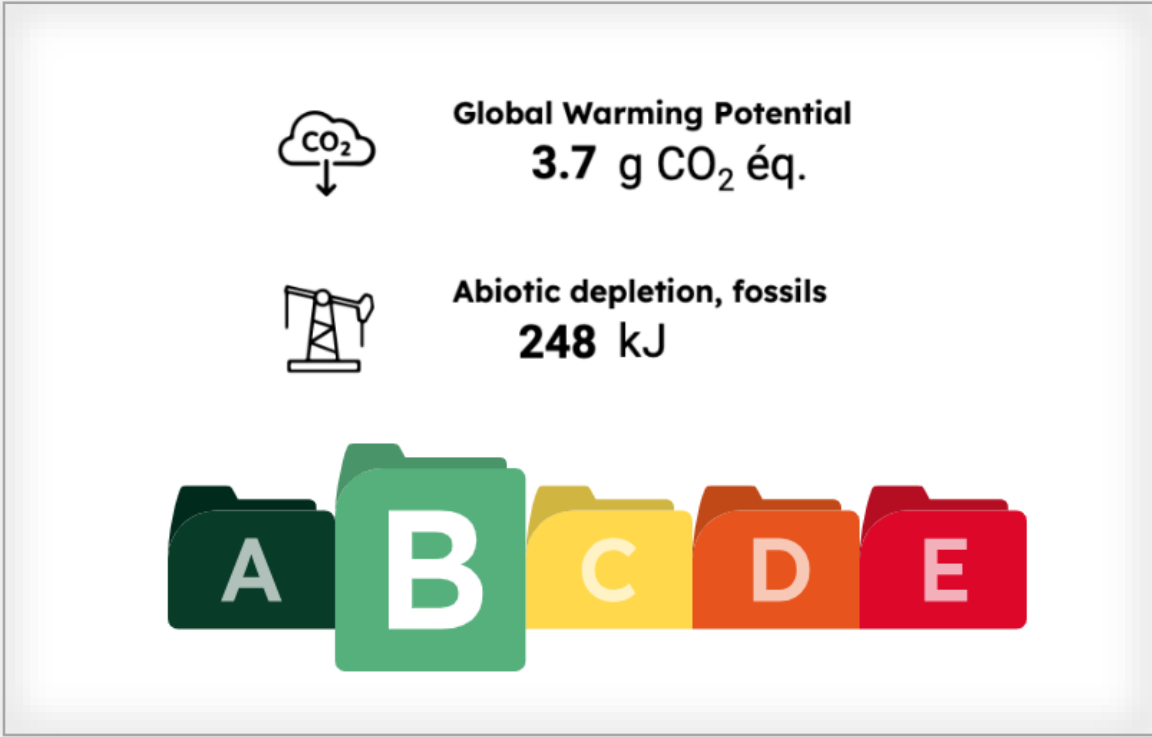
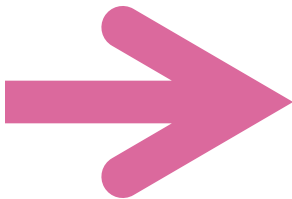
Study

ACV du SI 2023

Perimeter

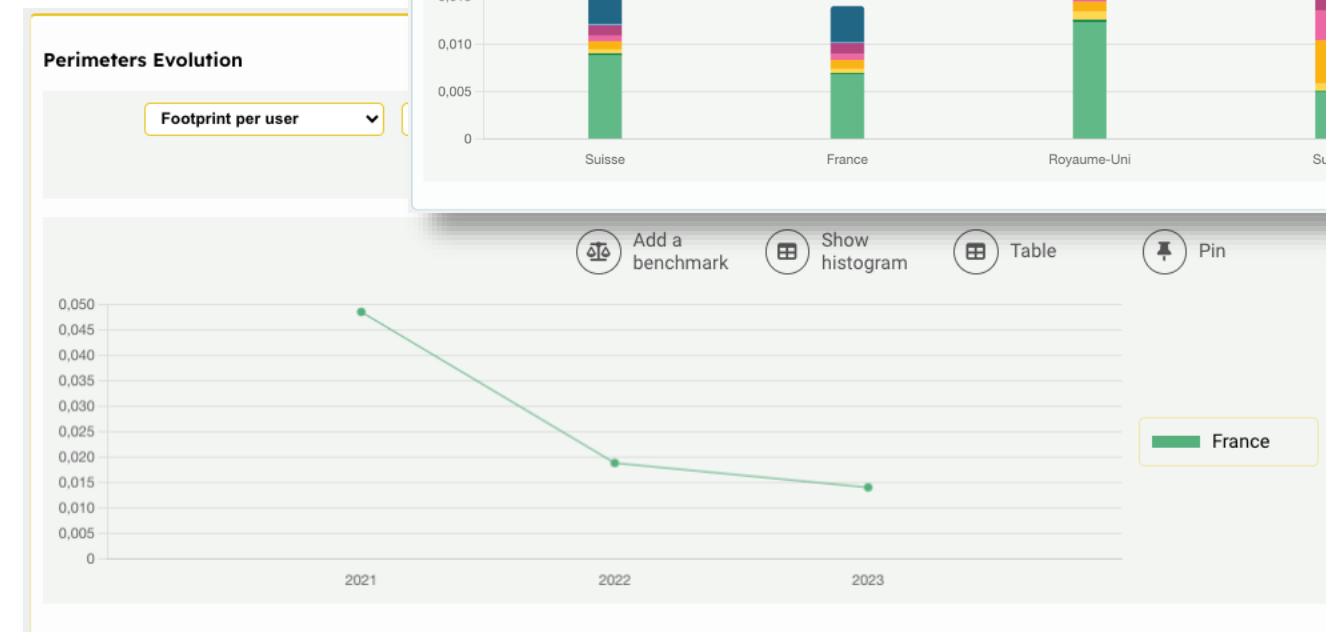
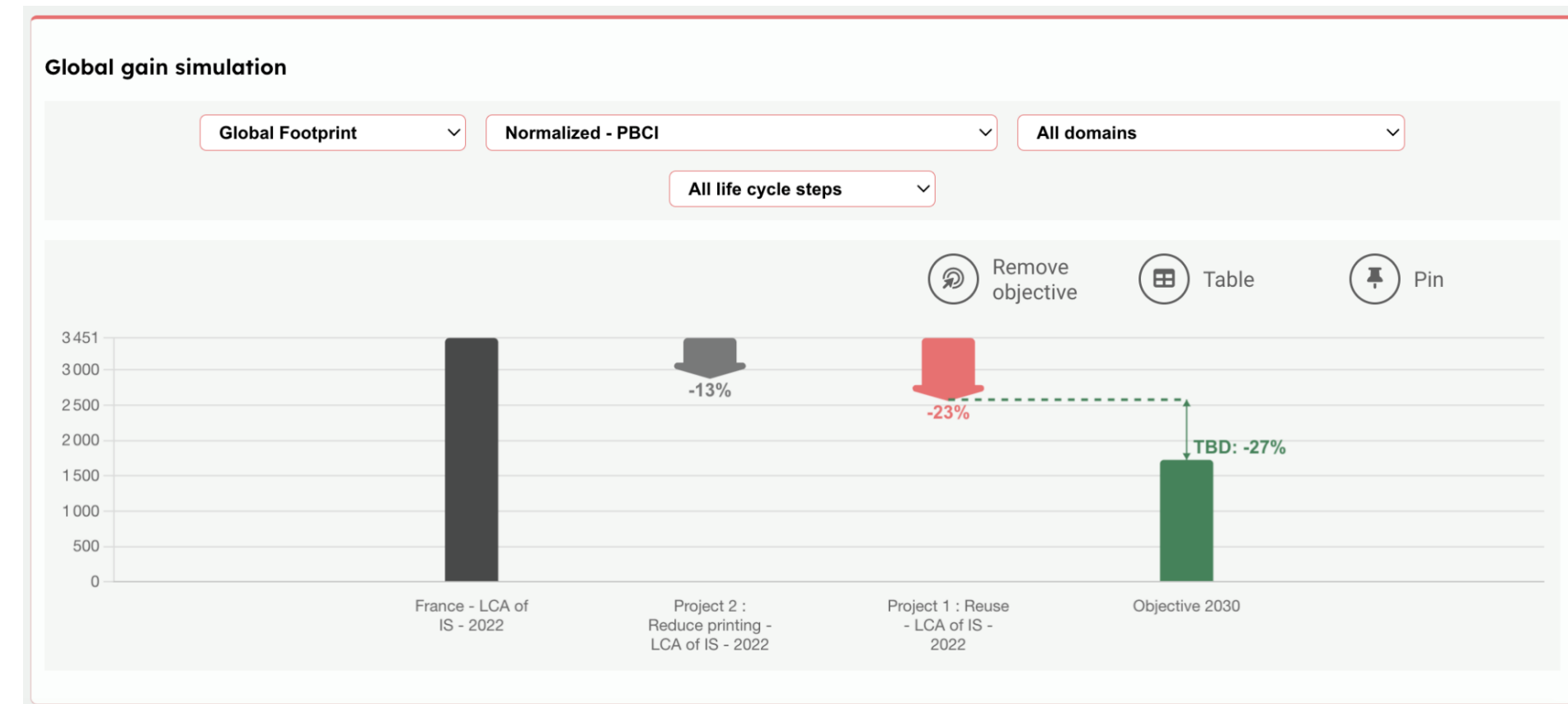
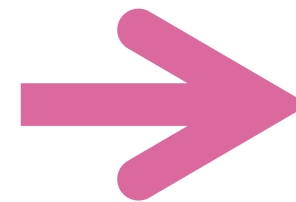
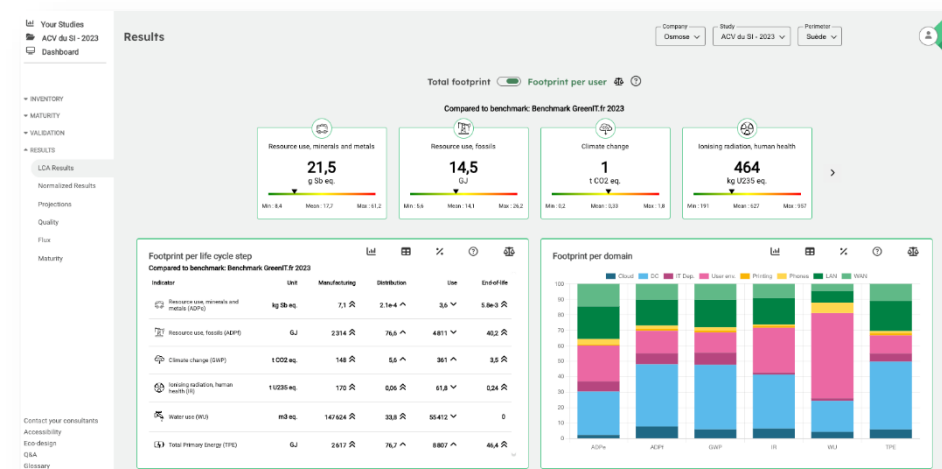
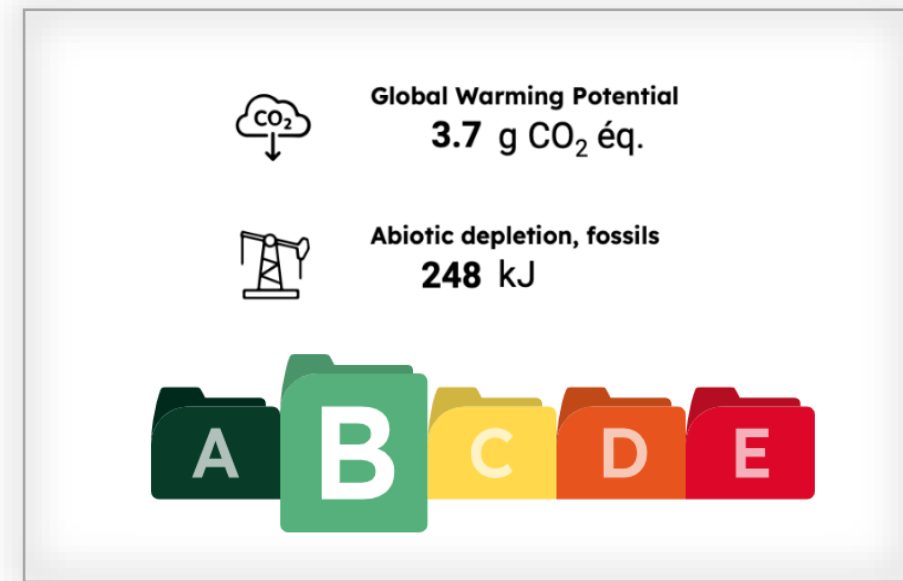
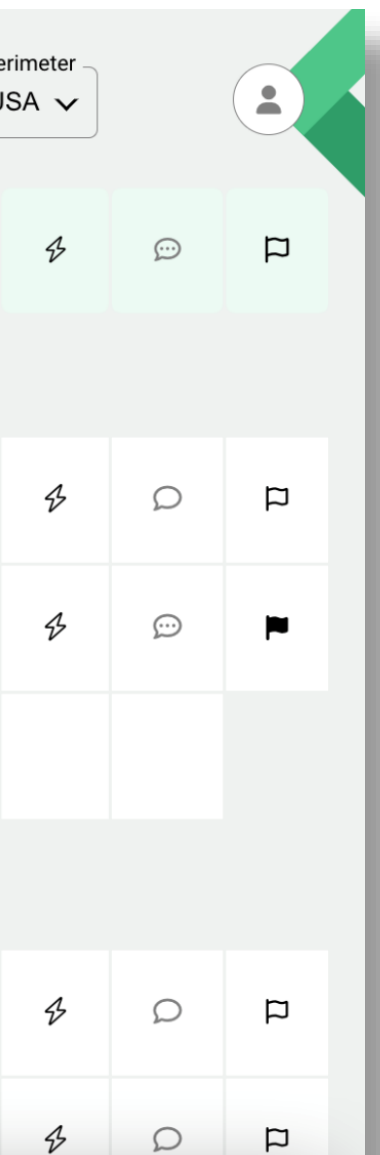
USA

	Unit	Quantity	Internal lifetime (years)	Reuse (%)	Reuse (years)	Total lifetime (years)	Data quality			
20 Equipment, with an average lifespan of 3,4 years										
120	Item	300	2	20	2	2,4	Medium			
asic	Item	5000	3	20	2	3,4	Low			
details		520				4				
50 Item, with an average lifespan of 5,1 years										
	Item	300	4	50	2	5				
	Item	50	6	0	0	6				





# How does it look like?





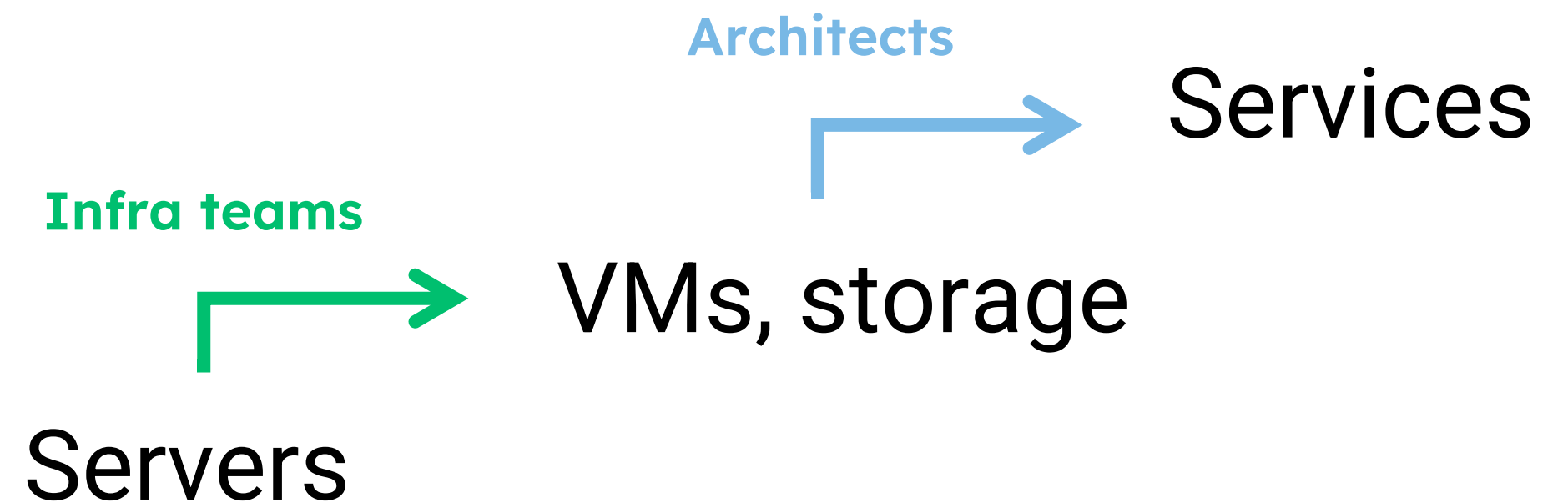
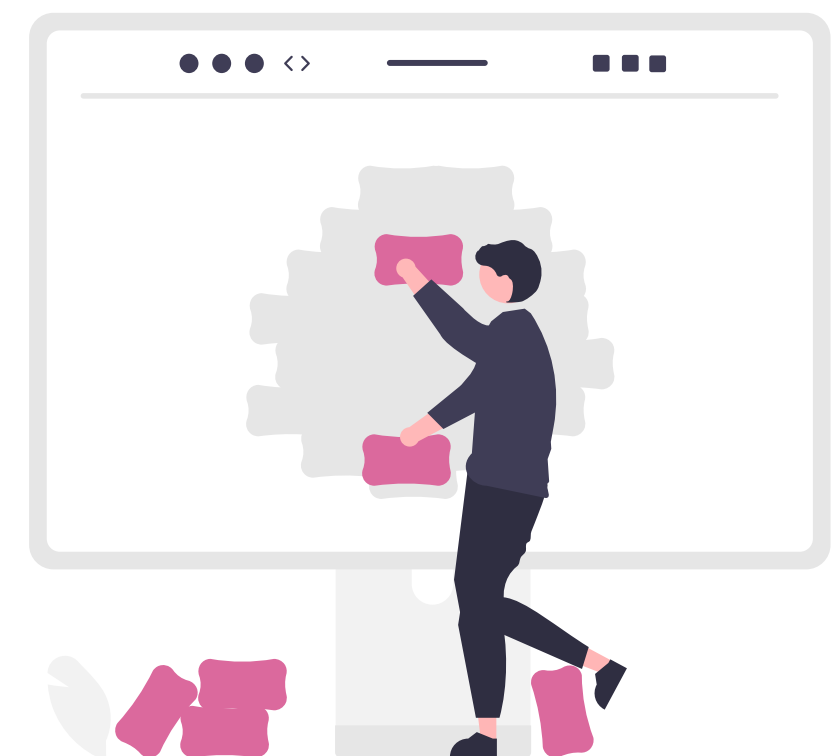


# Let's play like with LEGO!

## Being **able** to experiment

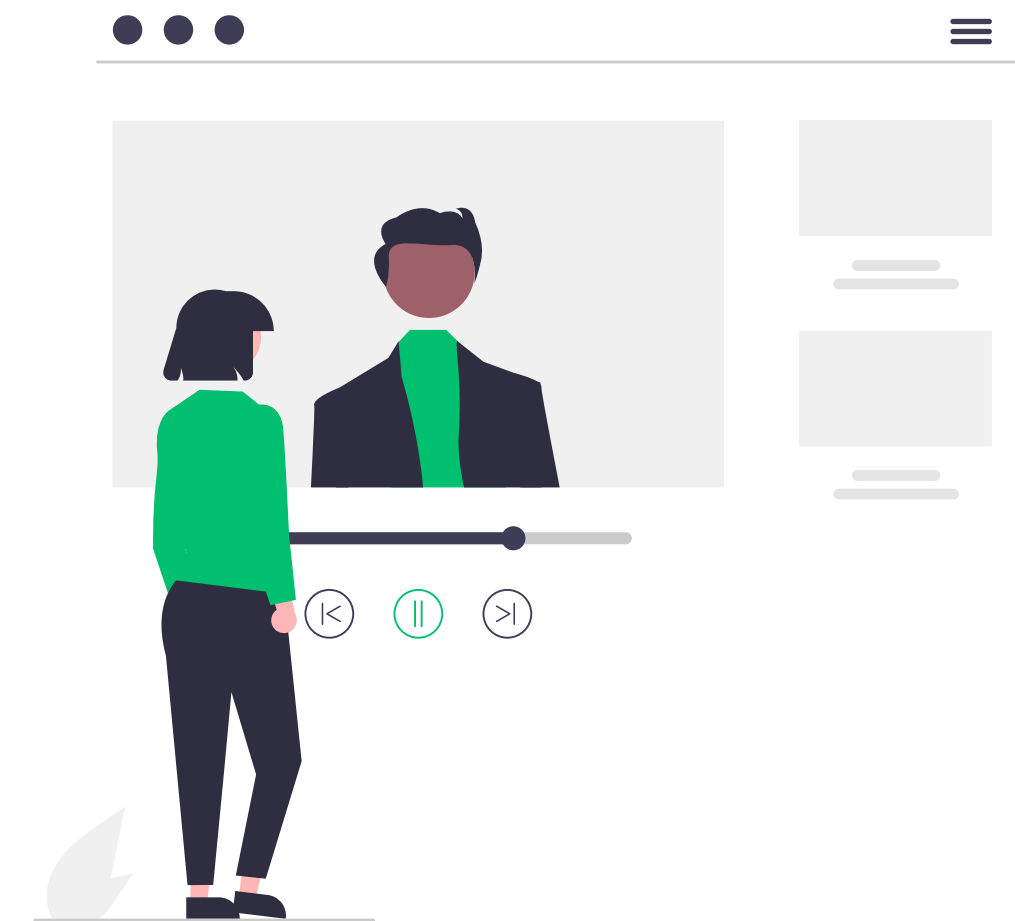
- Any PO/PM/Architect is able to perform a **simplified** LCA assessment of its **own** product...
- ...Using "**building blocks**" s.he manages.

- A PO will call on CPU hours, Gb stores, etc...
- An infra team would rather play with electricity, servers & cooling.





# A supervised experimentation



## A supervised experimentation process

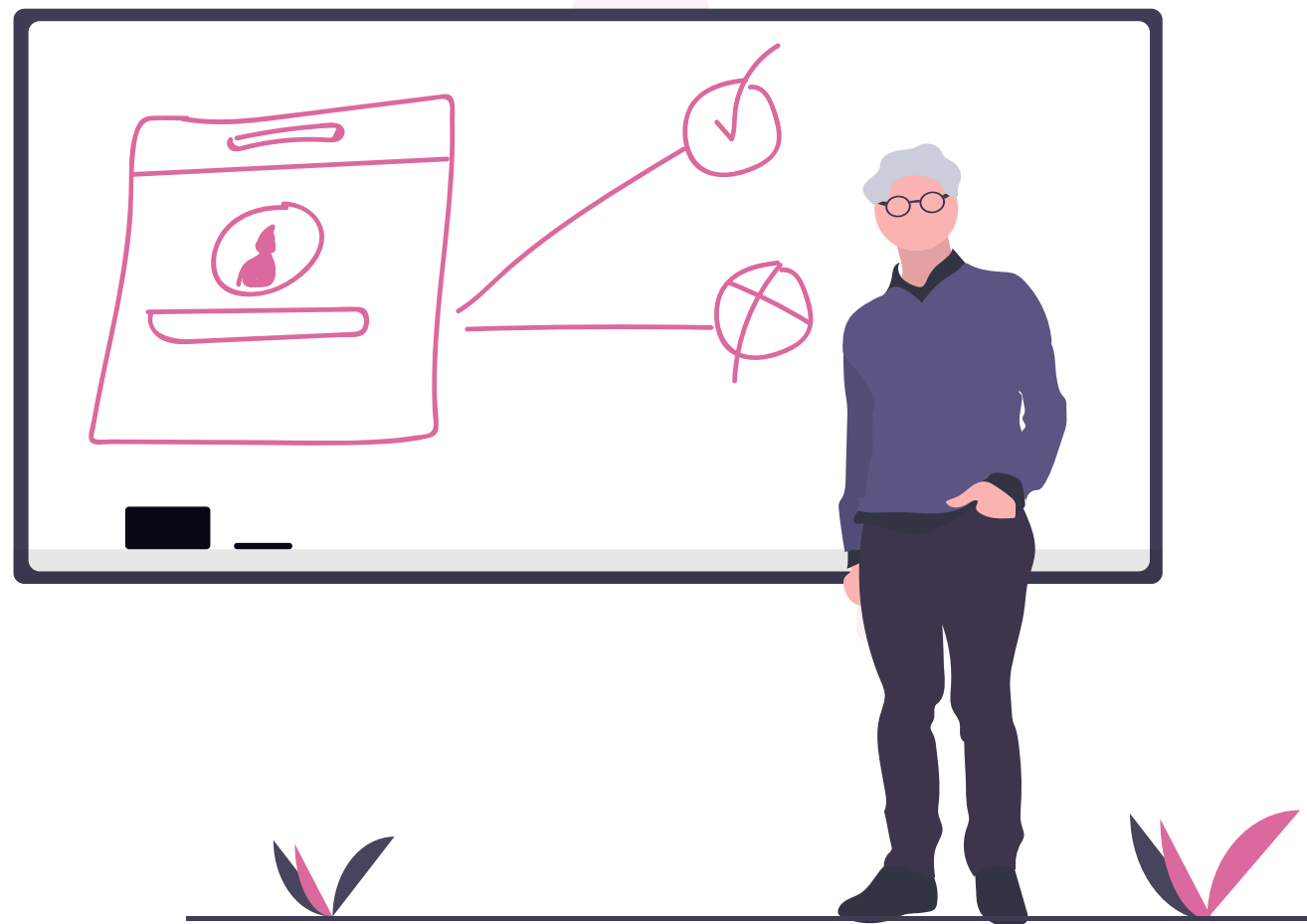
- User (PO/PM/Architect...) is invited to join a movement, a **community**
- Existing **stakeholders**, incl. consultants, are onboarded,
- Encouraging to **fit in reality** (projects, refactor, ...) & **foster intuition**/experience.

- A global Sustainable IT network
- Guidance & internal website
- Engaging IT consultancies to provide trained consultants & support the project
- Free access to simulations & tests.



What did **you prefer**, back in the days?

## Teaching team



## Experimentation team







# — A human solution to a human problem

Design a scalable human system

- **Ability:** Scope of responsibility & simplification
- **Experimentation:** opposed to formal teaching, to increase adoption
- **Supervision:** Consistency, guidance & sense of belonging.





# — A human solution to a human problem

Design a scalable human system

- **Ability:** Scope of responsibility & simplification
- **Experimentation:** opposed to formal teaching, to increase adoption
- **Supervision:** Consistency, guidance & sense of belonging.

## Who cares?

Sustainability  
is a reason to  
care. And this is  
very strong.





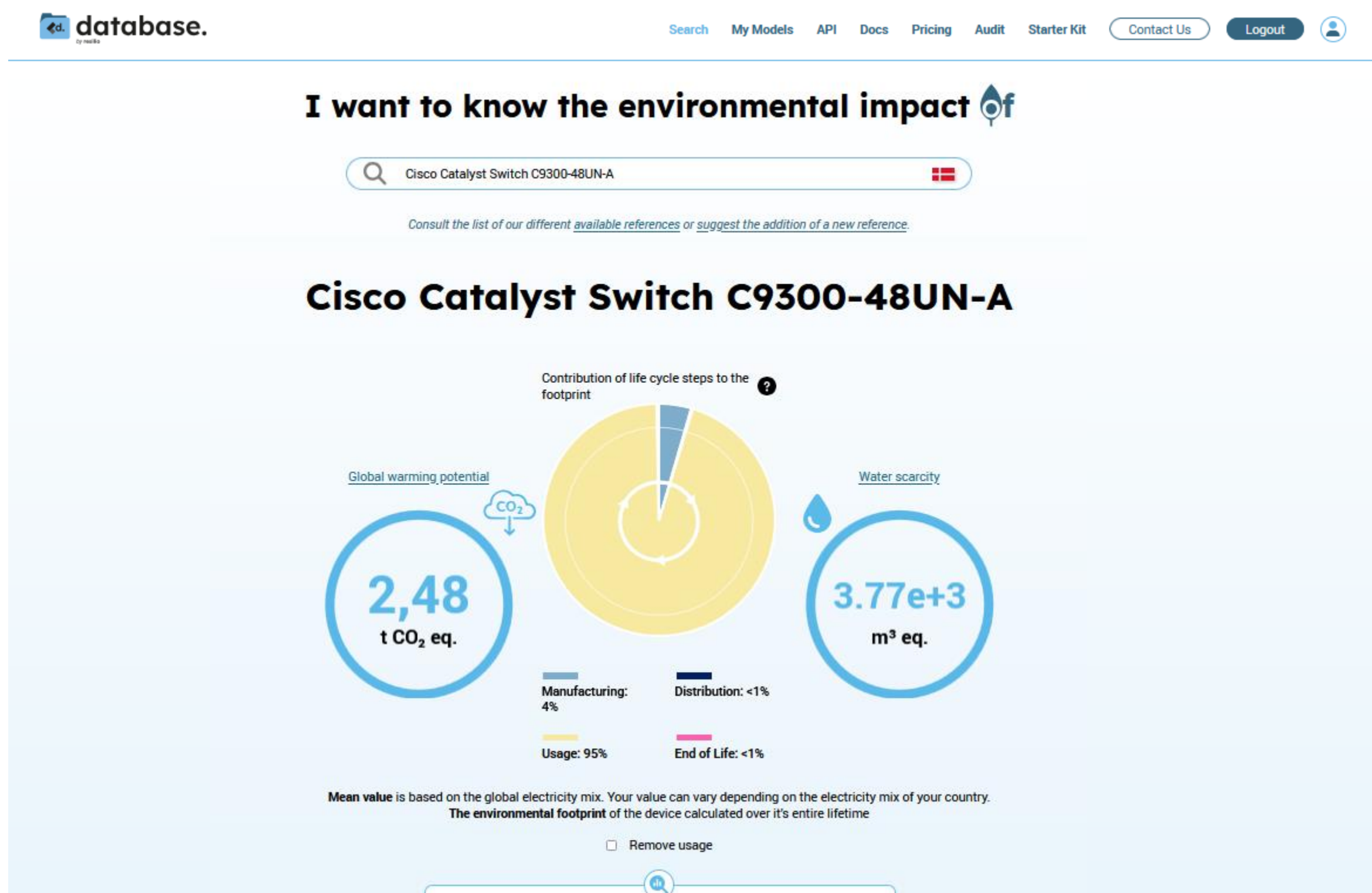
# #3

A technical solution  
LCA datasets



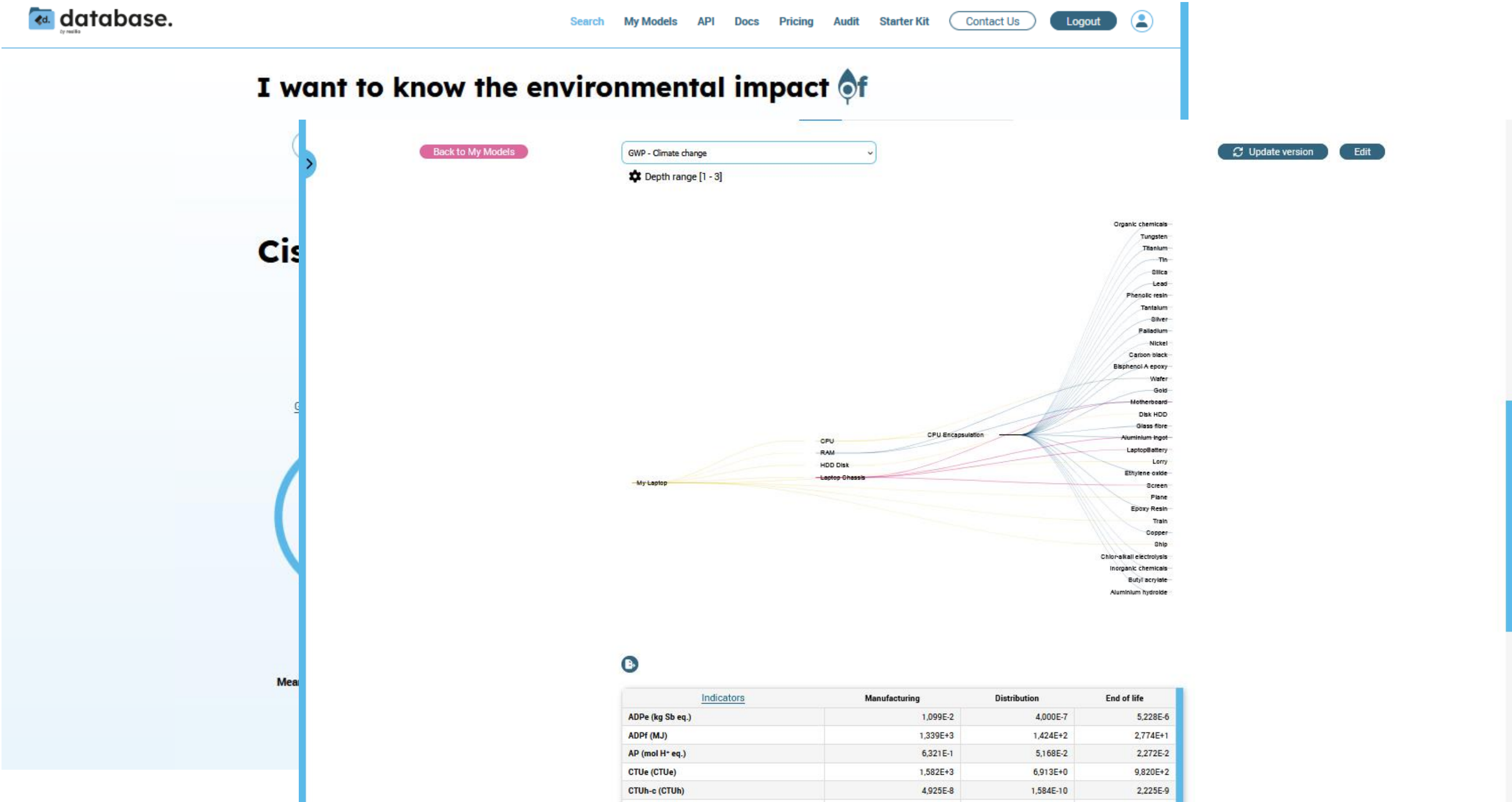


# The **largest & most accurate** IT footprint DB



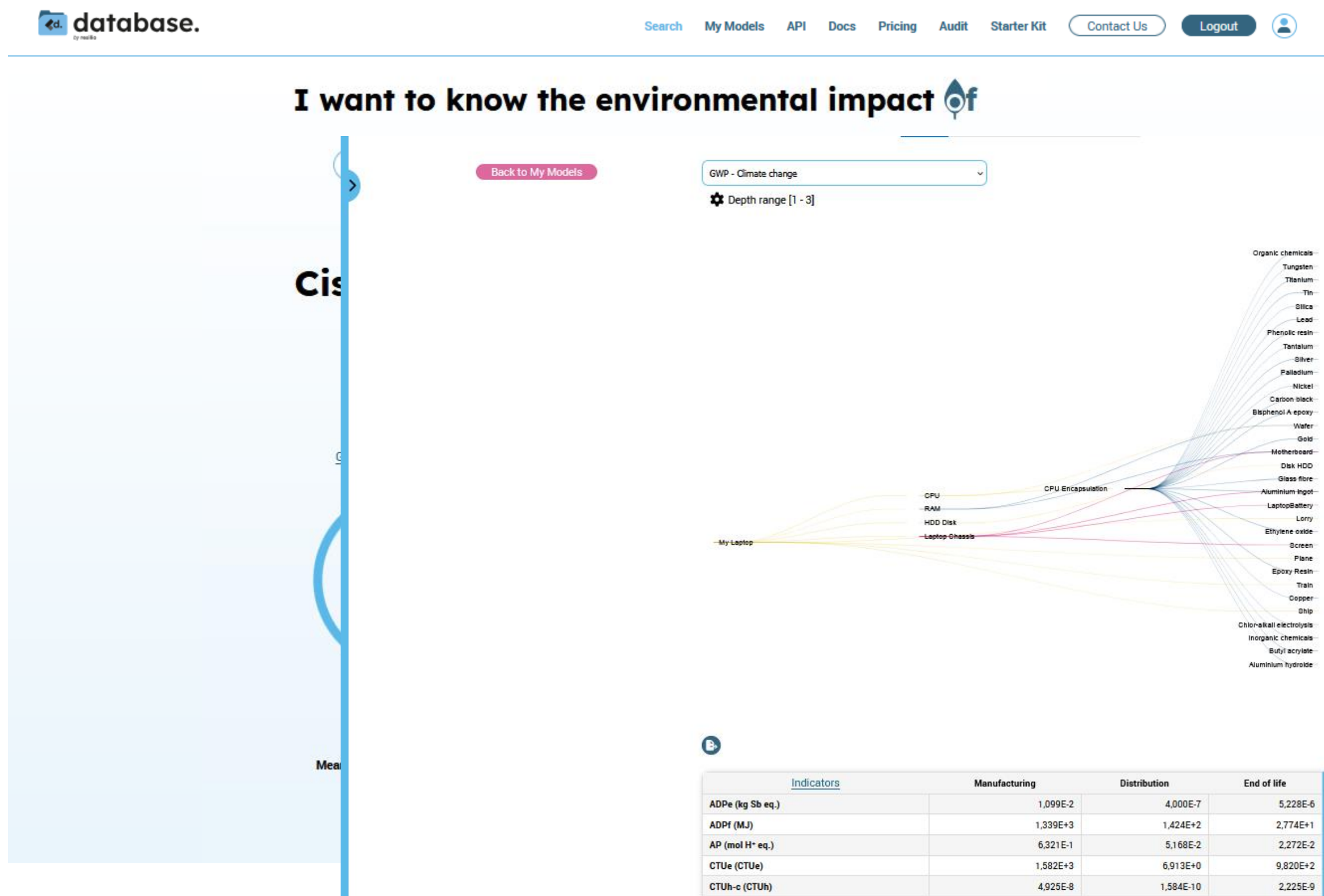


# The largest & most accurate IT footprint DB





# The **largest & most accurate** IT footprint DB



[db.resilio.tech](https://db.resilio.tech)

Academia &  
(public) research  
get **free** access

Independent LCA data  
build with:

ecoinvent

Electricity Maps



**Sponsor gift: Data for ecoCompute community**



is proud to support

**the**  **ecoCompute community**

[db.resilio.tech](https://db.resilio.tech)

**Code: ECOCOMPUTE2025**

3 months for free







# #4

A technical solution  
Software



# Embark your stakeholder



**Basic user**

**Advanced user**

**Coordinator /  
expert**

**Consultant**



**Guidance & simple UX**



**Abilities & rights**



# Capitalize, consolidate & put in common

*PO can browse the building blocks - storage, VMs... - created by the infra team!*  
Hiding complexity, caring about updates, ...

The image displays three overlapping screenshots of a software interface, likely for managing IT equipment configurations. The interface is designed to be user-friendly, allowing users to browse and configure various hardware components.

**Left Screenshot (Add equipment by - Explore):**

- Section: **Add equipment by**
- Tab: **Explore**
- Input: **User environment**
- Section: **Choose the type of CMDB you want to import**
- Input: **Laptop**
- Info: **Only laptops and servers are supported for now.**
- Section: **Indicate the number of the header line of your CMDB**
- Section: **Select or drag and drop your CMDB file**
- Button: **Load your file**
- Footer: **Apply to entire study** (checkbox), **Cancel**, **Add**

**Middle Screenshot (Add equipment by - Configuration):**

- Section: **Add equipment by**
- Tab: **Configuration**
- Section: **Select a domain**
- Input: **User environment**
- Section: **Search for a product reference or an equipment type**
- Input: **laptops**
- Section: **Equipment categories**
- List: **Laptops** (selected)
- Section: **Equipments**
- List: **HP 15 Laptop PC Laptop**, **HP 17 Laptop PC**
- Section: **Apply to entire study** (checkbox)
- Footer: **Cancel**, **Add**

**Right Screenshot (Add equipment by - Configuration):**

- Section: **Add equipment by**
- Tab: **Configuration**
- Section: **Add a new configuration:**
- Buttons: **Laptop**, **Switch**, **Television**, **Monitor**, **Storage**, **Virtual Machine**
- Section: **Server type**
- Buttons: **CPU**, **GPU**, **RAM**, **Storage**, **Screen**, **Usage**
- Section: **Size (Gb) :** **1024**
- Section: **Casing (Inch) :** **M2**
- Section: **Technology :** **SLC**
- Footer: **Apply to entire study** (checkbox), **Cancel**, **Validate**



# Guide & coordinate

Ready to use template + full internal catalogue

Your Studies

ACV du SI

Dashboard

▲ INVENTORY

Detailed view

Settings

User environment

Printing

Phones

Local network (LAN) &

Contact your consultants

Accessibility

Eco-design

Q&A

Glossary

Method

Support

fr - en

resilio

User environment

Organization  
Osmose

Study  
ACV du SI 2023

Perimeter  
USA

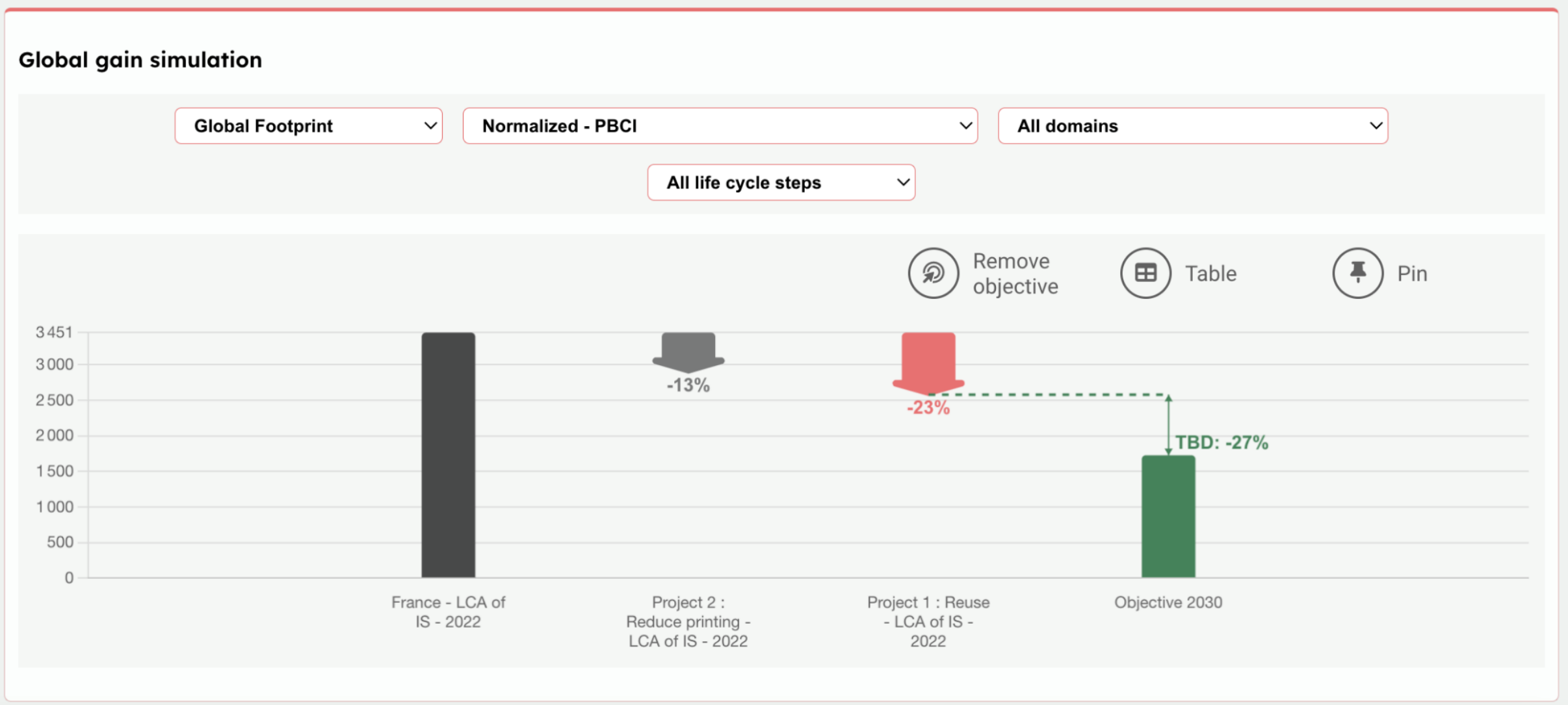
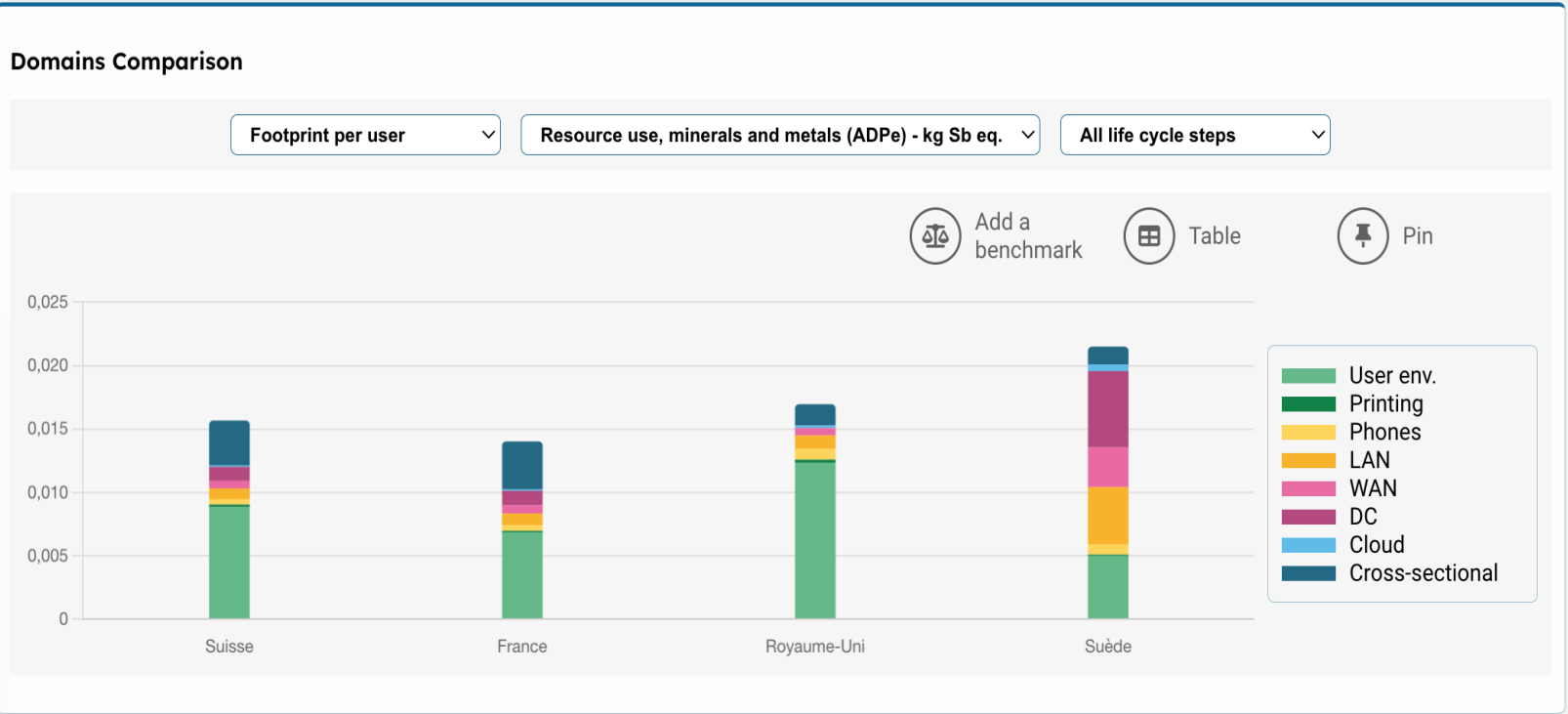
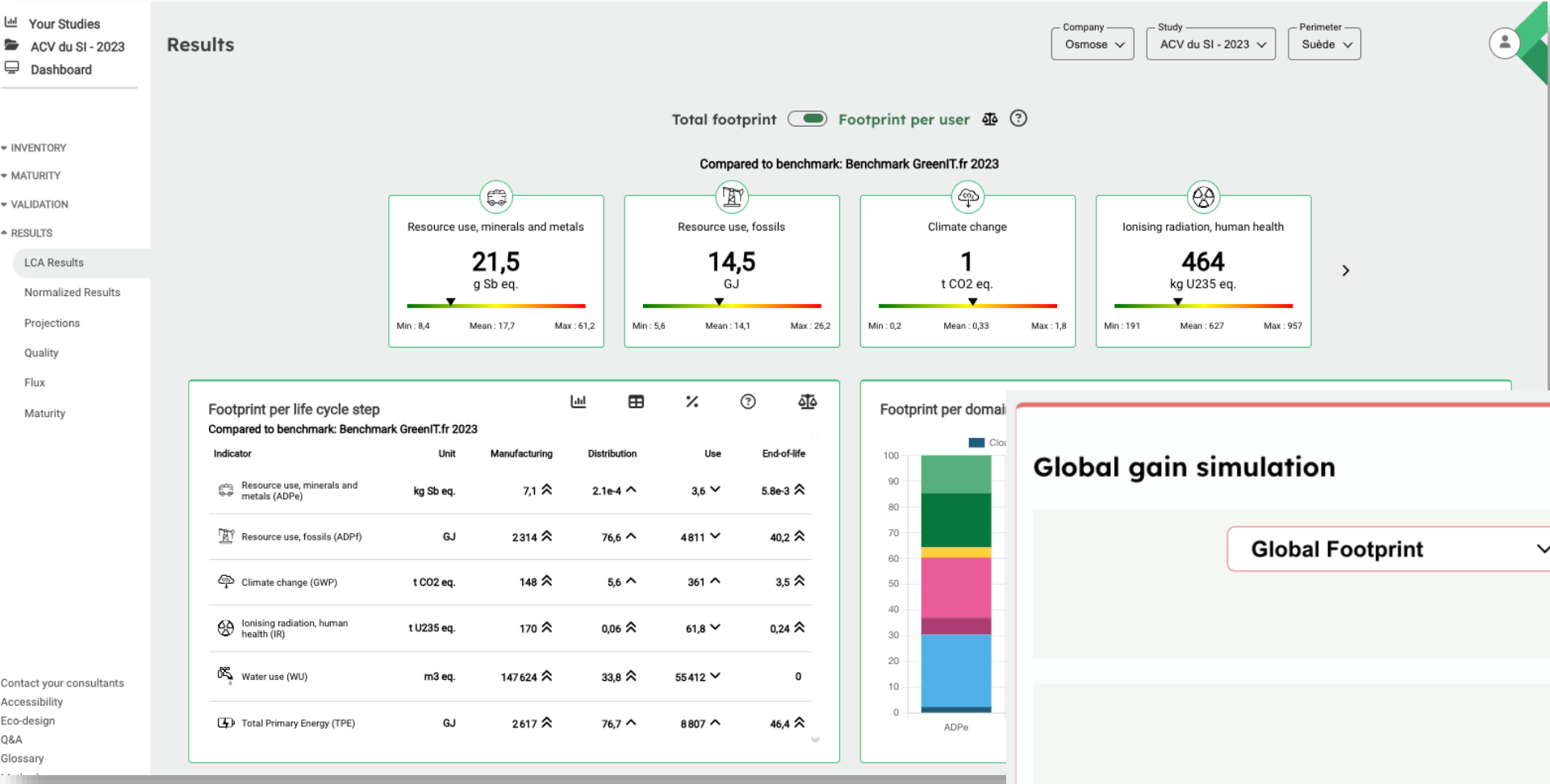
Type	Unit	Quantity	Internal lifetime (years)	Reuse (%)	Reuse (years)	Total lifetime (years)	Data quality			
Laptops : 5 820 Equipment, with an average lifespan of 3,4 years										
Dell Latitude 3120	Item	300	2	20	2	2,4	Medium			
Laptop <i>Generic - Office/basic</i>	Item	5000	3	20	2	3,4	Low			
Laptops - CMDB_laptops		520				4				
Desktops : 350 Item, with an average lifespan of 5,1 years										
Desktop <i>Generic - Basic</i>	Item	300	4	50	2	5	---			
Desktop <i>Generic - Middle-range</i>	Item	50	6	0	0	6	---			

Intranet website

- Contacts
- Trainings
- Slides & video
- Uses-cases
- Examples
- Internal guidance
- Quotation from external suppliers...



# Enable experiment





# Scaling - Why should we care?



\*Legend from the original NYT comic has been modified.